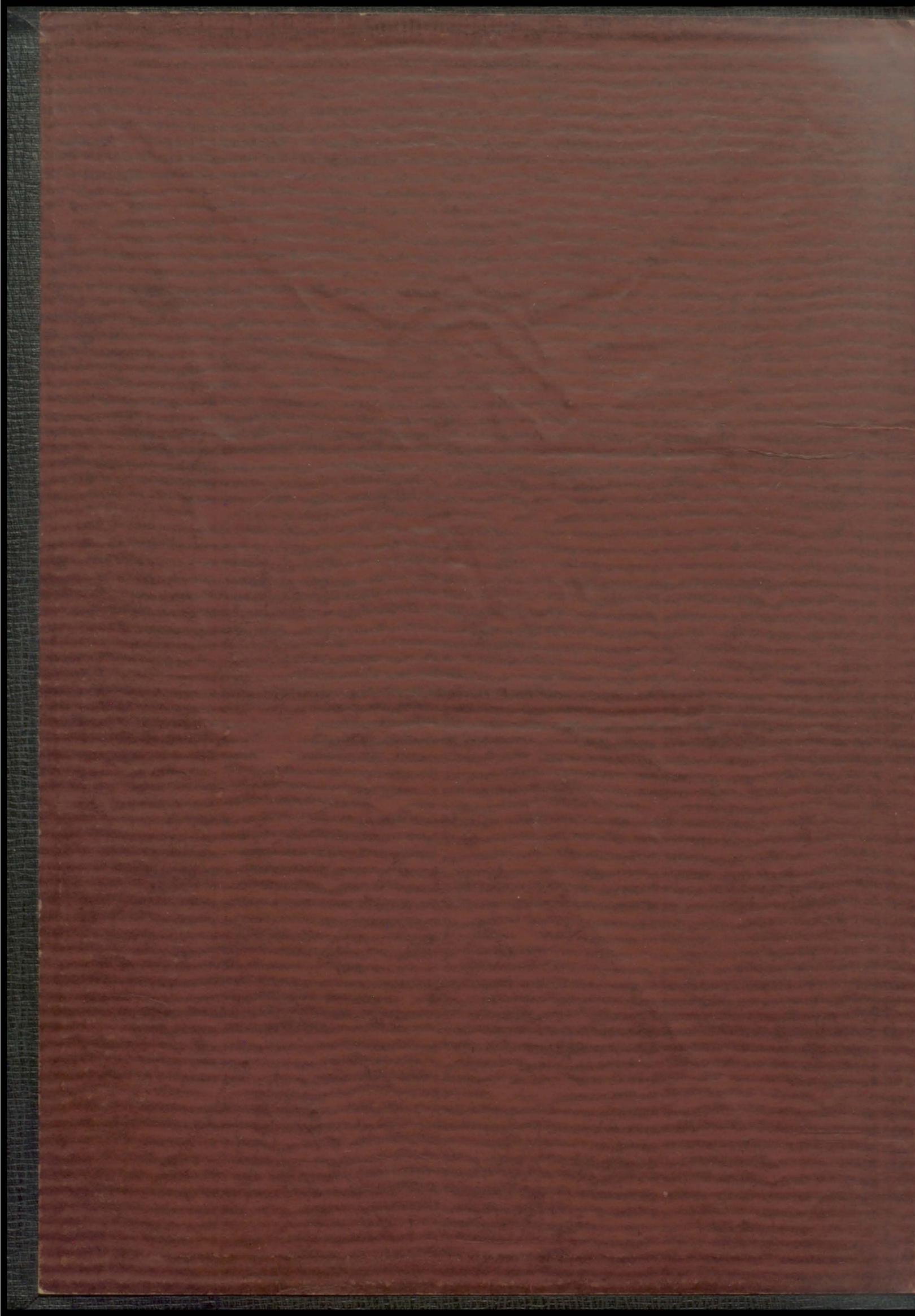
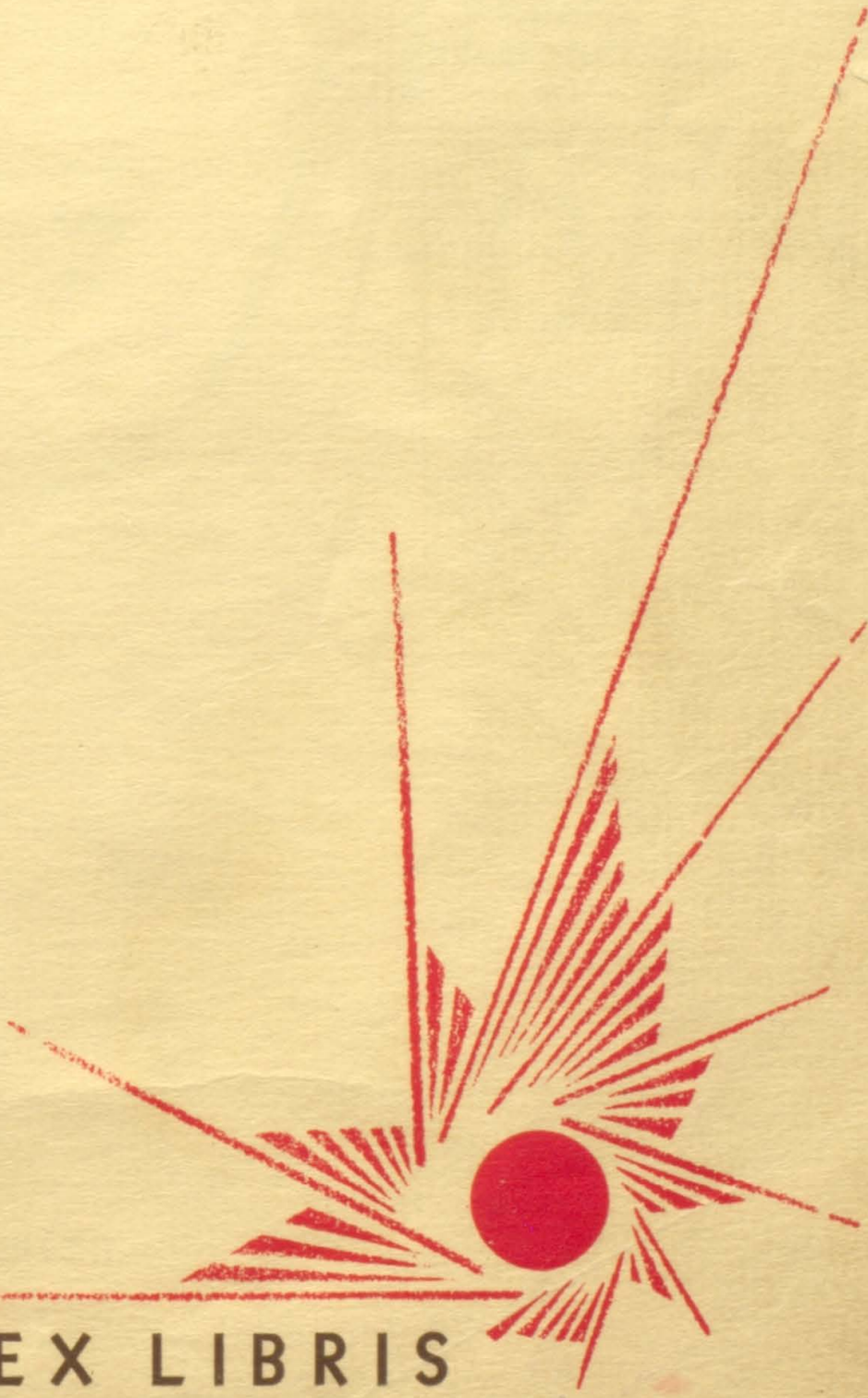




The Flash

1931



A red abstract graphic located in the bottom right corner of the page. It features a solid red circle as a central element, from which numerous thin, radiating lines extend outwards in various directions. Some lines are straight, while others are slightly curved or fan-like, creating a starburst or sunburst effect. The lines vary in length and thickness, giving it a dynamic, hand-drawn appearance.

EX LIBRIS

STAFF

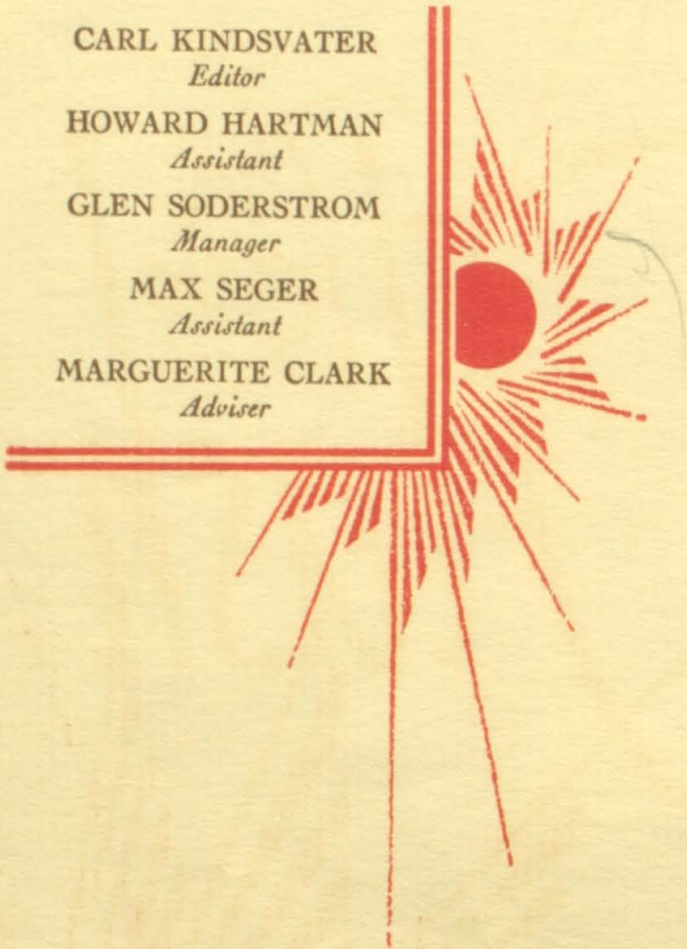
CARL KINDSVATER
Editor

HOWARD HARTMAN
Assistant

GLEN SODERSTROM
Manager

MAX SEGER
Assistant

MARGUERITE CLARK
Adviser



Designed and Engraved by
THE MID-CONTINENT ENGRAVING CO.
WICHITA, KANSAS



Illustrating the story
of the year.

Published by the
senior class of Hois-
ington High School,
Hoisington, Kansas.

The 1931 Flash



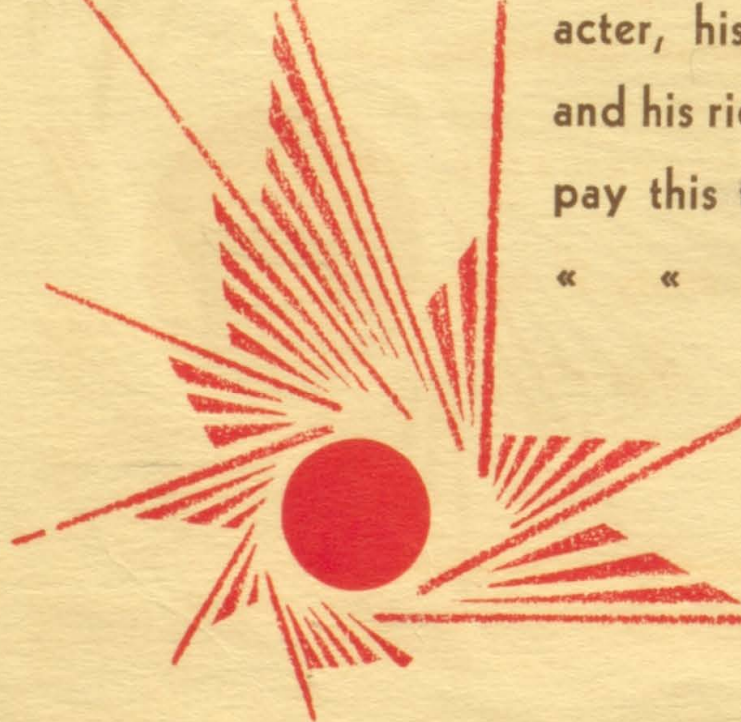
The
Inspiration
Edition



DEDICATION

Because of his inspiring character, his breadth of vision, and his richness of humor, we pay this tribute to

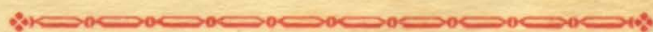
« « Edward D. Kroesch





FOREWORD

In this Inspiration Edition of the Flash, it has been our purpose to immortalize a glorious year of life in our school as it has moulded us through those three great sources of inspiration---human contacts, personal achievements, and creative beauty in nature «







CONTENTS

HUMAN CONTACTS

Administration
Classes

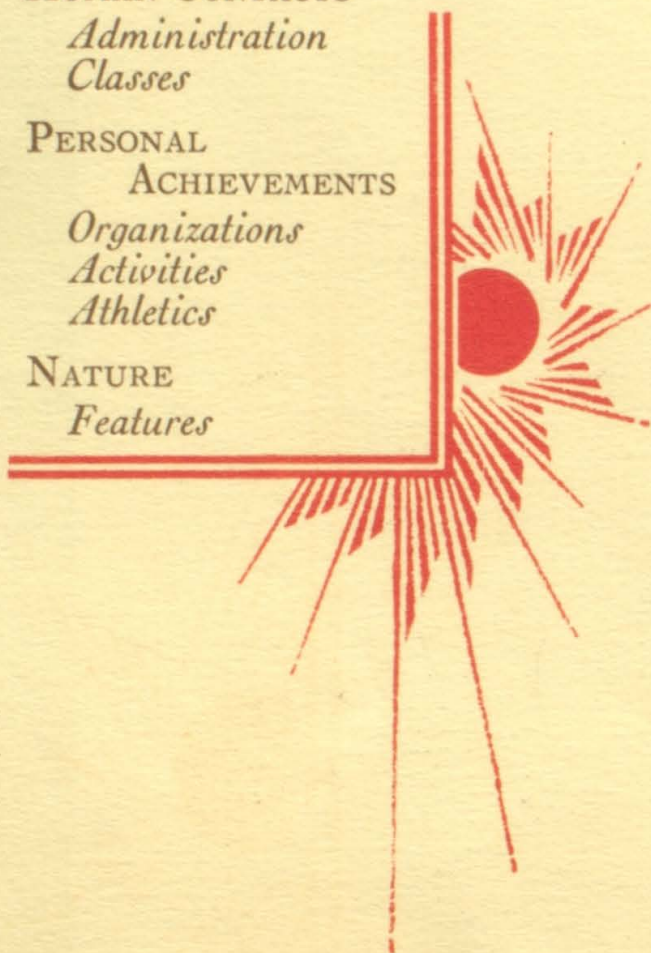
PERSONAL

ACHIEVEMENTS

Organizations
Activities
Athletics

NATURE

Features



I - N - S - P - I - R - A - T - I - O - N



"Human Contacts"

1959



CORNELIUS BROWN MAGILL
BRACK SODERSTROM RAGAN

BOARD OF EDUCATION

Of the entire school system, perhaps, the Board of Education receives the least recognition for its able and unfailing efforts to secure and maintain the highest educational standards.

It is not an appointed body; every member is elected by the people to serve without pay for a four-year term at the end of which he may be re-elected. The viewpoints of merchants, laborers, lawyers, doctors, and housewives are combined in the formation of a group that is primarily responsible for the advancement and progress in our school organizations.

Students are offered an educational training that has been developed to the full extent of the resources of the community. Hoisington High School is a member of the North Central Association of Secondary Schools and Colleges and ranks in Class A of state schools.

Four courses of study, College Preparatory, Normal Training, Business, and General, are offered to its pupils. Our school has distinguished itself for many years in the fields of athletics, music, forensics, and scholastic achievement. Individual class records and all-school records have in many cases ranked with the very highest in state and district contests. All this we may largely contribute to the unselfish and considerate service of our Board of Education.

The present members of the board are: president, Mr. Roy Cornelius, publisher of the Hoisington Dispatch; vice-president, Mrs. T. J. Brown, former instructor in the high school; clerk, Mr. F. A. Soderstrom, cashier of the Peoples State Bank; J. Q. Ragan, mortician; Gene Brack, prominent automobile dealer; and H. H. Magill, general foreman, Missouri Pacific Shops.



EDWARD D. KROESCH
Superintendent

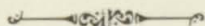
C. C. HARDY
Principal

ADMINISTRATION

With the exception of a brief interval during the Great War, Edward D. Kroesch has been closely associated with the Hoisington Public Schools for the past fifteen years. As an instructor in the high school before the War, he saw the excavations made for the present high school building. In 1920, after serving with the American Expeditionary Forces in France and one year as Superintendent of Schools at Barnard, Kansas, Mr. Kroesch returned to Hoisington to be principal of the high school. He served in this capacity until 1925 when he assumed the position of Superintendent of Schools in Hoisington.

The construction of the modern Lincoln School Building, the adoption of tests which compare the scholastic ranking of Hoisington schools with others in the state, and his success in getting the students and administration to cooperate are but a few of the achievements of his administration.

Mr. Kroesch received his Master's Degree in Languages from the University of Kansas in 1916, having previously been graduated from Ottawa University with A.B. and Mus. B. degrees.



For the past six years C. C. Hardy has served Hoisington High School in the two responsible positions of principal and athletic director. His influence has tended to raise both the scholastic and athletic standards of the school.

In dealing with the students he has made his decisions from an unbiased and unprejudiced viewpoint. To further his efforts to be impartial, he has permitted the students to adopt a form of self-government and has judiciously considered the recommendations of the Student Council.

Mr. Hardy was graduated from the University of Kansas in 1925 with an A.B. degree. Since that time he has studied at the University of Colorado and Northwestern University in preparation for his Master's Degree in Business Administration.

The 1931 Flash



MARIE ISERN
Foreign Language
Univ. of Kansas, A.B.

PAULINE MONROE
Music
K.S.T.C., Emporia, Mus. B.

KENNETH L. PETERSON
Social Science and Speech
Bethany College, A.B.

CORDELIA PENN
Study Hall Supervisor
K.S.T.C., Pittsburg
Life Certificate

LULA RAE WISER
Science
Washburn Col., A.B.

JAMES R. TAYLOR
Science
Univ. of Kansas, A.B.

FLORENCE MULLINS
Home Economics
Kans. Wesleyan Univ., B.S.



The 1931 Flash



HELEN L. MORGAN
English
Univ. of Kansas, B.S.

ENOLA SNODGRASS
Mathematics
Univ. of Kansas, A.B.

MARGUERITE CLARK
English
Univ. of Kansas, A.B.

V. I. VANIMAN
Manual Arts
McPherson Col., A.B.

MAE REINERT
Commercial
Bethany Col., Accts.B.

KENNETH CRAWFORD
Band and Orchestra
Mo. Wesleyan, A.B.

LURINE WHISMAN
Physical Education
Univ. of Kansas, B.S.





ELDON TINDALL, *President*—Football 3, 4; "H" Club 3, 4; President Student Council 4; Glee Club 3, 4; Class Treasurer 1; Class President 4

MORRIS KELTNER, *Secretary*—Hi-Y Cabinet 3, 4; Student Council 3; Class Secretary 4; Class Treasurer 2

MARJORIE STEPHENS, *Vice-President*—Girls' Letter Club 3, 4; President 4; G.R. Cabinet 3, 4; Glee Club 3, 4; Class Vice-President 4; "Bab"

ELLEANOR GREGG, *Treasurer*—Girls' Letter Club 2, 3, 4; Glee Club 1; Cheerleader 3, 4; Pep Club 4; Class Treasurer 4; "Bab"; "Fourth Wall"

SENIORS

Conceited! august! adjectives of all sorts, but not one that really applies. A queer sort of ironic humor creeps into our story as we trace back to the days when a small group of timid, bleary-eyed children first entered the Hoisington schools and organized themselves as the class of '31—back when the Call twins wore knee pants and "Red" Tindall was two-thirds freckles and the other third a ball of string, several marbles, a knife, a button, and a broken clock spring.

We are wondering, when this book comes off the press and the "conceited" seniors are reminded of their closing school days, will it be a feeling of happiness or sorrow that will surge over them?

Perhaps memories—memories of class fights or parties; of football, basketball, track; of class plays and school projects; of activities, both joyful and inspiring—perhaps those memories will all rush to their minds—their "august" minds.

But shucks, why be so sentimental? Those green freshmen, fresh sophomores, and half-witted juniors couldn't understand, anyhow.

A conceited editor hopes that the seniors will consider this book a fulfillment of their desires for a school annual and that our innocent underclassmen will be fatally impressed by the brave, bold pioneering that so fully characterizes our illustrious class throughout its history.

The 1931 Flash



ELIZABETH STIPES—Girls' Letter Club 3, 4; Glee Club 3, 4

ARTHUR STUKEY—Glee Club 3, 4

RUBY BROWN—Glee Club 3, 4; "Daddy-Long-Legs"

GLEN SODERSTROM — Basketball 4; Track 2, 3; Secretary "H" Club 3, 4; Hi-Y Cabinet 1, 2, 3, 4; Student Council 2, 4; Class President 2; Cheerleader 1, 2; Band 4; Orchestra 1, 2, 3; Bus. Mgr. "Flash"; "Daddy-Long-Legs"; "Once in a Blue Moon"; "Green Stockings"; "Bab"

EMMA OCHS—G.R. Cab. 4

LEONARD FIELD—Glee Club 1, 4; "Fourth Wall"; Raymond H.S. 2, 3

ORPHA LINDSAY—Girls' Letter Club 3, 4; Debate 2, 4; Glee Club 3; "Bab"

MAX SEGER—Football 3, 4; "H" Club 3, 4; 1931 "Flash" Staff; Glee Club 4; Orchestra 4; "Green Stockings"; "Fourth Wall"

CARL KINDSVATER—Football 3, 4; "H" Club 3, 4; Editor 1931 "Flash"

VIOLET HOPPER—Glee Club 2, 3, 4

HOWARD HARTMAN—Football 4; "H" Club 4; Class Vice-President 1; Debate 4; Glee Club 4; "Bab"; 1931 "Flash" Staff

ELSIE BOTT—Girls' Letter Club 3, 4; Glee Club 3, 4; G.R. President 4; Class Treasurer 3

ORVAL WILSON

RUBY DAWLEY—Girls' Letter Club 2, 3, 4; Student Council 2, 4

BEATRICE SCHUGART—Glee Club 2

ROY D. CALL—Football 3, 4; Basketball 3, 4; Boys' Quartet 4; Glee Club 4; "H" Club 3, 4, President 4; "Scarab"; 1931 "Flash" Staff

The 1931 Flash



VELMA WINTER—Girls' Letter Club 3, 4; Glee Club 3, 4

RANDALL McCORKLE—Football 3, 4, Captain 4; Basketball 2, 3; "H" Club 3, 4; "Fourth Wall"

VICTORIA BRACK

EARL KELTNER—Football 2, 3, 4; "H" Club 3, 4; Track 3

BRENDON GREEN—G. R. Cabinet 3, 4, Vice-President 4; Glee Club 3, 4; Girls' Octet 4; Girls' Quartet 4; Orchestra 1, 2, 3, 4; Violin soloist, 1st, Winfield Contest, 1928; 1st, Wichita, 1929; 1st, Lindsborg, 1930; "Green Stockings"

HAROLD WARNER

OELLA MARTZ—Girls' Letter Club 3, 4; Class Sec. 2

HARRY BRYANT—Great Bend H.S. 2, 3

MARY LINSNER—Glee Club 1, 3, 4

JAMES CLIFT—Football 4; "H" Club 3, 4; Student Council 1, 4; "Fourth Wall"; "Scarab"

LEORA BEALS—Orchestra 1, 2, 3, 4

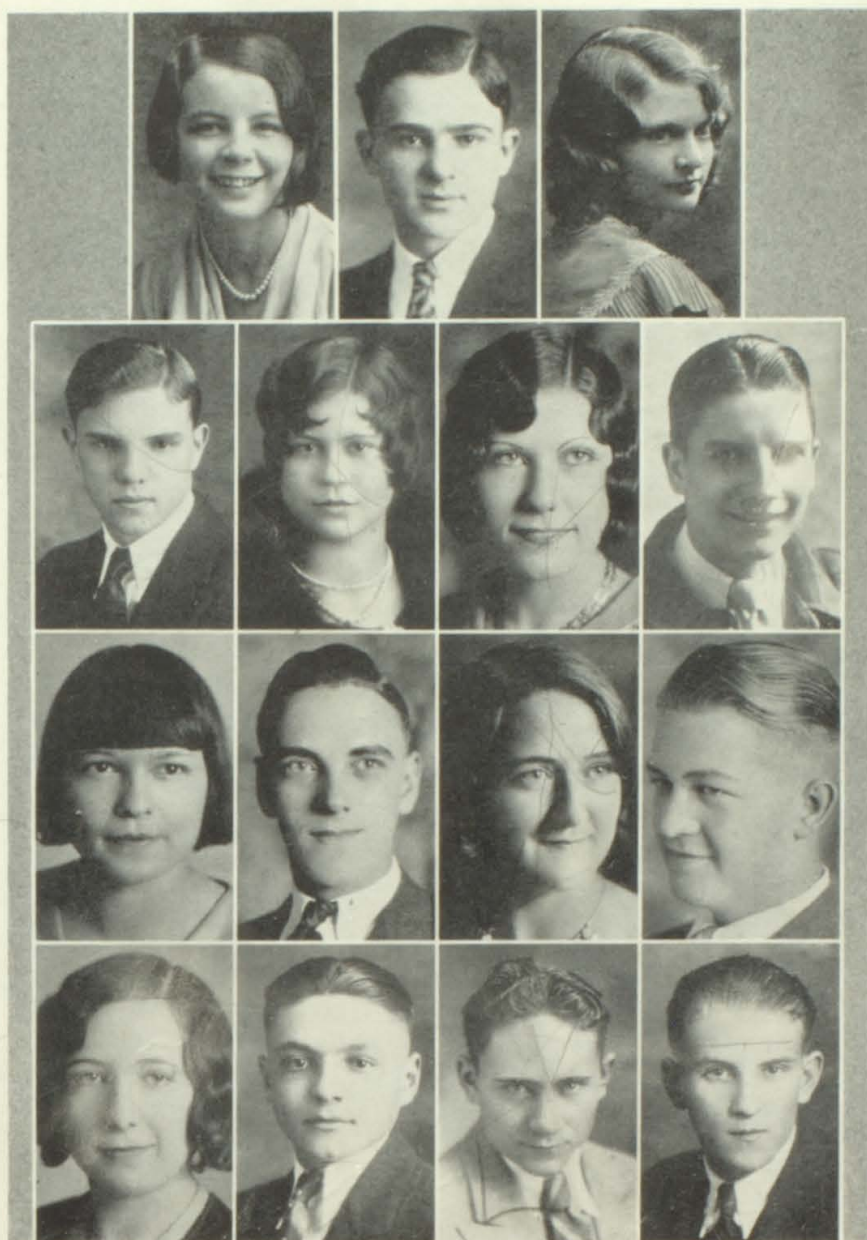
MAURICE JESSUP—Football 3, 4; Class President 3; "H" Club 3, 4; Glee Club 2, 3, 4; Hi-Y Cabinet 2, 3

MAUDE EVELEIGH—Girls' Letter Club 3, 4

ROY STOSKOPF—Band 4; Orchestra 4

MONROE BECKETT—Glee Club 3, 4; "Green Stockings"

The 1931 Flash



MYRTLE EVELEIGH—Girls' Letter Club

FREDERICK STOSKOPF—Glee Club 1, 2, 3, 4; Hi-Y Cabinet 2, 3, 4; Debate 4; "Bab"; "Scarab"; "Green Stockings"

VIRGINIA WILSON—Girls' Letter Club 2, 3, 4; Orchestra 2, 3, 4; Student Council 3; "Daddy-Long-Legs"

RAY CALL—Basketball 3, 4; "H" Club 3, 4; Student Manager Athletic Assn. 4; Glee Club 1, 2, 3, 4; Hi-Y Cabinet 2, 3, 4, President 3, 4; Debate 4; Boys' Quartet 3, 4; "Bab"; "Fourth Wall"

JUNE EAGLES

ELEANOR PEAK—Girls' Letter Club 3, 4; G.R. Cabinet 3; Student Council 4; Secretary-Treasurer, Athletic Association 4; Class Vice-President 2, 3; "Bab"; "Fourth Wall"

ARTHUR ZIRKLE—Glee Club 1, 3, 4; "Scarab"

RUBY KANARD—Married 4 ELMER TINDALL—Hi-Y Cabinet 4

VIRGINIA PARKER—Girls' Letter Club 2, 3, 4; "Daddy Long-Legs"; "Fourth Wall"

HERBERT SCHREPEL—Hi-Y Cabinet 1, 2, 3; Debate 4; Pep Club 4; "Bab"; "Green Stockings"; "Fourth Wall"

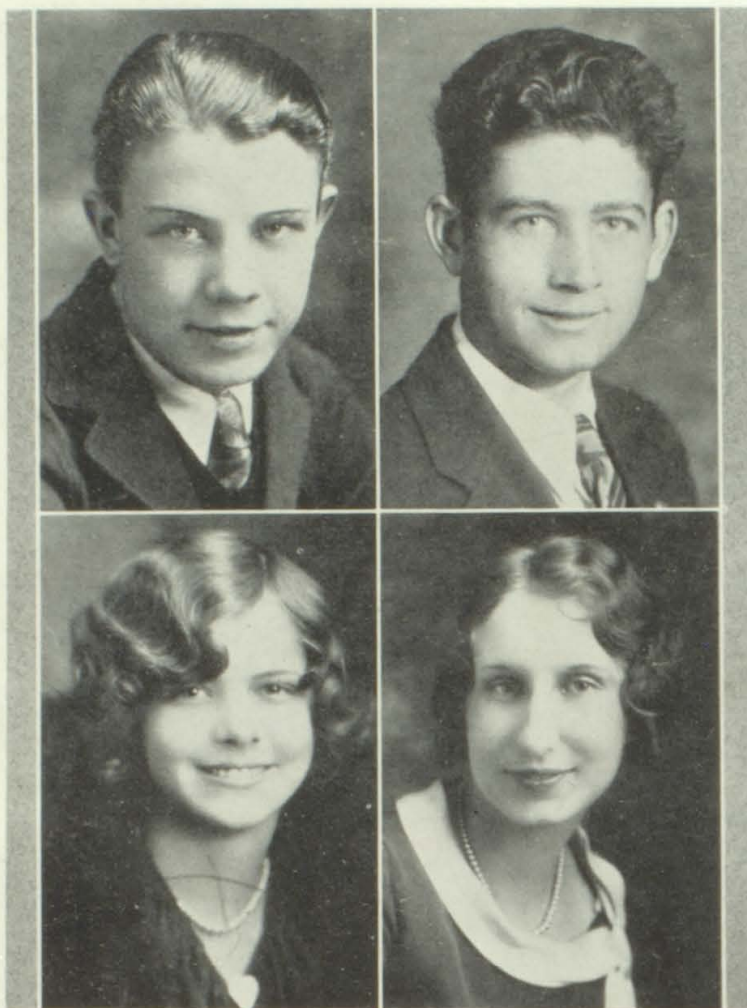
MILDRED LEWIS—Orchestra 4 MELVIN NUSS—Orchestra 2, 3, 4; Band 4

NORVILLE MILLER—Football 4; Basketball 4; "H" Club 4; Glee Club 3, 4; Boys' Quartet 3, 4; "Fourth Wall"; Lincoln H.S. 1, 2

TROMER SMITH—Football 3, 4, Capt. 3; Basketball 2, 3, 4; "H" Club 3, 4; Class Secretary 1; Glee Club 4; Boys' Quartet 4; "Fourth Wall"

9 married
9/29/33





EVERETT ASBURY, *President*

ELIZABETH HONISCH, *Treasurer*

JOE KLINE, *Vice-President*

MYRTA HALL, *Secretary*

JUNIORS

We really don't see the need for a junior write-up when everyone is so well acquainted with the "doings" of that renowned group; however, since it is customary for all classes to have "words" in the yearbook, we've taken this means of making a written record of our efforts which we wish to have placed in the archives of H.H.S.

In spite of all the "conceited ones" could do, the gang of '32 turned in their A.A. membership fees first and started the year by winning the famous "loyalty dollar." They gave the first class chapel and presented "Alabama Bound" as the first dramatic production of the year. Junior basketeers gained honors in both basketball tournaments, the weaker sex taking first place and the boys second only to the seniors.

Other honors have gone to the class through individual efforts. Three juniors aided H.H.S. in securing forensic fame, and a junior girl, Lucille Beetz, was chosen as the K.U. Relay Queen candidate. And of course there is G. I. Robinson, the wit of the school, a set of twins, the tallest boy, three of the girls' quartet, winners of contests, members of athletic teams, office-holders, a radio station operator, farmers, and horse thieves—all juniors.

Isn't this a just cause for words? We think so, and our only regret is that we lack space for more.

(Heed not this epistle; 'twas writ by a junior.)

The 1931 Flash



VERNON OCHS	CLARK MYERS	ANNA JEAN SMITH	ANNA LAUDICK
MARY KORF	G. I. ROBINSON	JACKIE BURCHFIEL	LUCILLE BEETZ
VERNON WAELDIN	ALICE RUTH LEONARD	CLARA BOYLE	MANO STUKEY
GRACE BARTON	PALMER DEINES	VALETTA AVERY	MERVIN SYPOLT
FRANCES J. CHURCHILL	MARY M. LEWIS	JAMES BOYLE	ERNESTINE LEVETT

The 1931 Flash



✓
ARCHER BOYLE

MILDRED MCGINNIS

✓
SUE FINN

✓
ELMER NUSS

VELMA HENRY

DAISY KINGSTON

✓
THELMA MAGILL

ROBERT SMITH

NAOMI CLARKE

LORETTA MURPHY

EDWARD HOWELL

HELEN LINSNER

EVELYN HARPER

PHILIP PEER

BERTHA LANKFORD

LETA CHARLES

LA VON BEERS

KENNETH SELLERS



The 1931 Flash



LOIS STOSKOPF

LUCILLE STOSKOPF

SADIE STUKEY

HELEN GUSTIN

LORETTA EVELEIGH

GLADYS KEENAN

MARJORIE LANGHAM

RETTA MURDY

WANDA WILSON

MAURINE VLADAR

FRIEDA SCHULTZ

CLARA DUMLER

ORVILLE BOYLE

JAMES MCCUTCHAN

ALVIN POPP

EARL MARKEL

HENRY WILDGEN

DAYTHON SHIVES



SOPHOMORES

Class Officers

ROBERT CHILDS.....*President*
BEVERLY ERICKSON.....*Vice-President*
RAY LOWRY.....*Secretary-Treasurer*

Ye gods! Where's that sophomore writeup? We've tried to shift it around until everyone has had a chance, but I suppose it's up to us to do it after all. We can razz the freshmen and boast of the juniors and seniors, but to save our souls there doesn't seem to be a thing to say about the poor sophomores. You'll have to admit that it's not such an easy job, and we're sorta hurried, anyhow, so here goes:

Just between you and me, I believe one of the reasons for the lack of copy material is the lack of sophomore activities. Of course, they don't have much to do, so we can't complain.

ROBERT CHILDS



President



Always
Always
Always
Top Row: GREEN MAYER SCHWARTZ POER MICHAELIS KRUG N. OCHS
Second Row: E. GAGE COLHOUR CARROLL FOSE HERBEL MONROE HOCHSTATTER MEYER
Third Row: STUKEY WINTER PITTMAN M. DYER SMITH LUCAS GUSTIN CHRISTOPHER

SOPHOMORES

Now, let's see, there was "Jarring Jim" Ward, fullback on the varsity football team, who made quite a hit with the girls because of his determined faces while carrying the pigskin. And Beverly Erickson, our active little drum major; Bob Childs, scandalous Cardinal reporter; Ray Lowry and Joseph Riedel, two more football players; and Jack Walker, talented musician—just to mention a few, for they're all very precocious children.

As you may gather, they haven't done so much yet, but it is rumored around school that the sophomores are the most outstanding class in high school with the exception of the juniors and seniors. Just give them two more years, and they will lead the parade.

All orthodox writeups might contain history, but when you find yourself writing some two hundred words without that history, what can you do but talk nonsense?

BEVERLY ERICKSON
Vice-President

RAY LOWRY
Secretary-Treasurer



Top Row: K. GRAY EVELEIGH MARTIN J. WALKER MOOS MEITNER CURRY
Second Row: O'SHAY J. GRAY KLINE L. GAGE RIEDEL MUNGER CRAWFORD
Third Row: CHENOWETH TINDALL SULLIVAN STRONG BENSON BERRY WILBORN FULLER BECKETT

FRESHMEN

Class Officers

WAYNE DAILY *President*
 LEO COXON *Vice-President*
 JAMES LYNCH *Secretary*
 JOSEPHINE JEFFREY *Treasurer*

Tramp, tramp, tramp, and September, 1930, shows an exceedingly large army of Green Warriors marching toward the high school. Don't be alarmed, though—it's just a mob of 93 freshmen going a step farther in conquering that "education."

Of course, finding their places in these new surroundings isn't so easy—it is, in fact, very unfortunate for those who pull boners.

Yet, in spite of all the upper classmen can do, their perseverance wins out, and we are now proud to say that the freshmen have become a part of the life and tradition of Hoisington.

WAYNE D.
Preside

LEO COXON
Vice-President



Top Row: OESER E. STOSKOPF W. STOSKOPF LOOP SCHWARTZ EVELEIGH POPP BOGER BURGAN
 Second Row: CRAWFORD MARKEL BREWER W. STOSKOPF HENRY MAGILL SMITH STICKNEY LINSNER
 Third Row: McCORKLE V. OCHS CHARLES HEJNY F. JOHNSON SCHAUF LOWRY CANNADY FINN L. OCHS

FRESHMEN

They have spent their time with contests, elections, parties, chapel programs, membership drives—all the duties and pleasures and activities which awaited them in their new place of learning. But only a summary of the success of this illustrious group must suffice: they hold the honors of being the largest class that has ever entered the school; their chapel programs have displayed both dramatic and musical ability; they have given a number of promising athletes to various forms of sport.

As could be expected, this group started out to the tune of ridicule and jeering, but as far as we can see, none of it was taken seriously. In fact, some of the superior juniors and august seniors have now become quite fraternal (the freshman girls are pretty).

Oh, after all, a freshman's life must not be so bad. We know of a fellow who's been one for two or three years now, and he hasn't wanted to change yet!

JOSEPHINE JEFFREY
Treasurer



JAMES LYNCH
Secretary



Top Row: MANWEILER LANE BEARD PHILLIPS MCGILL MORSBACH BAHR D. OCHS
HARPER R. WALKER

Second Row: E. LAUGHLIN DUMLER THOMPSON E. LAUGHLIN MANN UNDERWOOD H. DYER
C. JOHNSON COCHRANE SELLERS

Third Row: CLARKE BROWN EICHMAN DAWSON E. OCHS MURPHY EHRLICH B. SCHULTZ
A. SCHULTZ MEYER MURRAY

MEMORIES

How sweet the silent backward tracings!
The wanderings as in dreams—
the meditation of old times resumed—
their loves, joys, persons, voyages.

—WHITMAN

N - S - P - I - R - A - T - I - O - N



**"Personal
Achievements"**

STUDENT COUNCIL

Student government has been a reality in Hoisington High since 1928, but not until this year has the Student Council been so influential in school affairs. It is organized as an advisory body, aiming to promote and control all student activities and to create and maintain the highest standards of high school life.

The Council, consisting of two representatives from each class and one from each organization, elects all its officers except the president, who is chosen by the student body. The present officers are: Eldon Tindall, president; Ruby Dawley, vice-president; Mearl Dyer, secretary; Naomi Clarke, treasurer; and Mr. Taylor, faculty adviser.

ATHLETIC ASSOCIATION

Since the introduction of the Athletic Association into H.H.S., the athletic activities of the school have become practically self-supporting. With sports under the capable supervision of this body, we are assured of financial security and fair dealing. It arranges all athletic schedules and approves the awarding of the "H."

This year 270 students were members of the Association. The executive committee for 1930-31 consisted of: Mr. Taylor, president; Miss Morgan, vice-president; Ray Call, student manager; Eleanor Peak, secretary-treasurer; and Coach Hardy, ex-officio officer.



Top Row:
Second Row:

UNDERWOOD	BEARD	SODERSTROM	CLIFT	WARD	EVELEIGH
TINDALL	PEAK	CLARKE	MR. TAYLOR	DAWLEY	DYER
MISS MORGAN	MR. TAYLOR	CALL	COACH HARDY	PEAK	SMITH



GIRL RESERVE

Starting the year with the annual Gypsy Pat-
eran at Lake Barton, the Girl Reserves have had
a year of unusual activity. They conducted a
membership drive contest; they sent baskets to
the needy both at Thanksgiving and at Christ-
mas with money derived from candle sales and
carol singing; they wrote letters to their Heart
Sisters and had a sweetheart party; they gave the
G.R. play, "Green Stockings"; and, too, they
enjoyed a number of picnics and slumber parties.

The officers for the year were: Elsie Bott,
president; Brendon Green, vice-president; Myrta
Hall, secretary; Loretta Eveleigh, treasurer. The
sponsors: Misses Marie Isern, Florence Mullins,
and Enola Snodgrass.

HI - Y

Organized in 1922, our Hi-Y is one of the oldest in the state of Kansas. The
34 members of the club have engaged in many activities during the past year,
among which were: the issuance of score cards at football games; the giving of
baskets and toys to the poor at Christmas time; the sopnsoring of a magazine
sales contest that culminated in a picnic which the losers gave for the winning
side. In addition there were athletic nights and the Camp Wood delegations,
besides many more parties and conferences.

This year's officers were: Ray Call, president; Robert Childs, vice-president;
Glen Soderstrom, secretary-treasurer; Morris Keltner, assistant secretary-treas-
urer; Mr. V. I. Vaniman, sponsor.



Just
Just
Gals

CABINETS

Top Row: CHURCHILL E. OCHS WILSON BOYLE JEFFREY MISS ISERN PETT KEENAN MURPHY STRONG
Second Row: DYER STEPHENS L. EVELEIGH HALL BOTT GREEN DUMLER TINDALL

Top Row: TINDALL RIEDEL F. STOSKOPF MR. VANIMAN
Second Row: MUNGER SODERSTROM RAY CALL CHILDS M. KELTNER



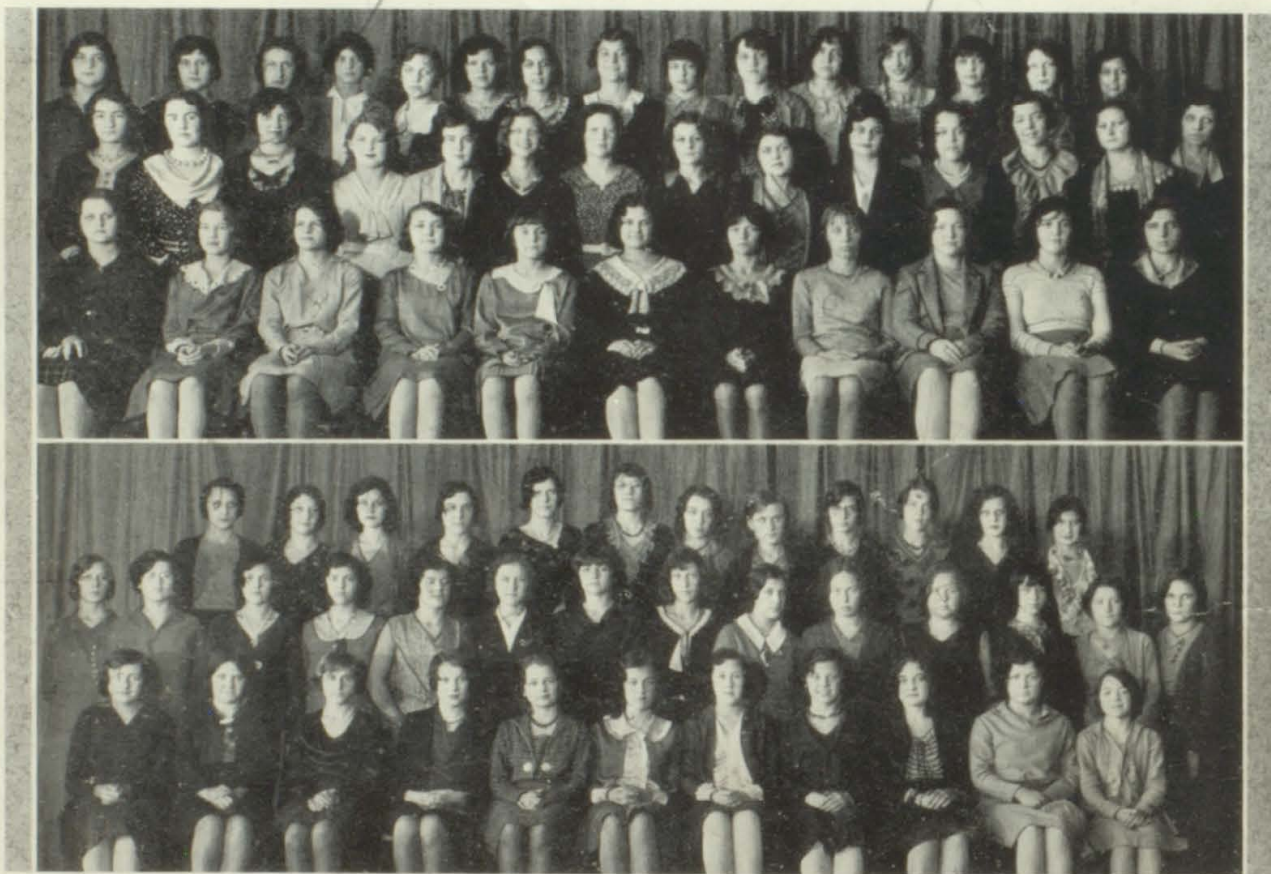
MUSIC

Under the able direction of Miss Pauline Monroe, who has been connected with Hoisington schools since 1928, the music department has enjoyed another very active and successful year.

Miss Monroe, a graduate of K.S.T.C., Emporia, carries the added responsibilities of grade school and junior high school music instruction. Until this year, she was also in charge of the band and orchestra, now under the supervision of Mr. Kenneth Crawford.

In the voice department are a mixed chorus, a boys' and a girls' glee club, a boys' and a girls' quartet, and a girls' treble clef octet. These various groups and a number of soloists attend annual music contests at Dodge City, Pratt, Hays, and Emporia, and take a very active part in school entertainments.

Miss Lucille Beetz, a junior of talent, has been accompanist for the department during the last two years.



GIRLS' GLEE CLUB

Top Row: O'SHAY BOTT HALL STIPES KEENAN LANGHAM V. WINTERS BENSON J. BECKETT
E. GAGE WOODBURN STILES C. BOYLE L. SMITH TINDALL
Second Row: ESCH MURPHY A. SCHULTZ HOPPER L. MURPHY F. SCHULTZ N. CLARKE
C. DUMLER GREEN B. STUKEY D. WINTER LEONARD H. LINSNER MISS MONROE
Third Row: WILSON MURRAY UNDERWOOD M. LINSNER LUCAS DYER G. CLARKE TRECHTER
CHURCHILL JEFFREY O. KOERBER

Top Row: B. SCHULTZ HENRY EHRLICH PETT STEPHENS A. SMITH H. MYER LEWIS
LAUGHLIN A. SELLERS CHRISTOPHER STRONG
Second Row: JOHNSON BERRY HERBEL CARROLL CHENOWETH E. OCHS V. OCHS SCHEUERMAN
BROWN BURCHFIEL CRAWFORD M. MEYER BEERS SULLIVAN
Third Row: HEJNY CANNADY FOSE MURDY BEETZ I. KOERBER FULLER ERICKSON EICHMAN
PITTMAN SCHAUF

MUSIC

On December 17, a cantata, "The First Christmas," was presented by the orchestra and the chorus, which, at that time, contained 164 members. Besides cooperating with the band in its program February 15, the chorus also gave its annual spring concert in April.

A new group has been formed this year in the girls' treble clef octet, which was featured in "The Bachelor's Escapade," a musical comedy sponsored by the Woman's Club.

The girls' quartet, composed of Brendon Green, Frances Jane Churchill, Naomi Clarke, and Irmgard Koerber, sang at the junior play, a Barton County teachers' meeting, and several club programs.

A most illustrious group of august seniors formed the boys' quartet. As far as we know they were Tromer Smith, Roy D. Call, Ray Call, and Norville Miller, with "Kelly" Miller as soloist.



Quartet: MILLER SMITH R. CALL R. D. CALL

Octet—Top Row: GREEN DYER N. CLARKE I. KOERBER
Second Row: M. MURPHY CHURCHILL FULLER ERICKSON

BOYS' GLEE CLUB

Top Row: MOOS SCHWARTZ F. STOSKOPF E. STOSKOPF POER BECKETT A. STUKEY TINDALL
R. D. CALL CHILDS
Second Row: B. WILDGEN SEGER FIELD DYER ROBINSON BOYLE MAYER SECHRIST
MUNGER GREEN COCHRANE COXON LOWRY
Third Row: MILLER M. STUKEY SMITH MARTIN H. WILDGEN MISS MONROE BEETZ
SODERSTROM RAY CALL JESSUP SELLERS HARTMAN

The 1931 Flash

BAND

Organized this year by Mr. Kenneth Crawford, the band has been an invaluable addition to Hoisington.

Mr. Crawford, graduate of Missouri Wesleyan, has indeed earned our appreciation for his work in instituting this body that has so nobly supported the school, both in pep and in its public concerts given in the spring before thoroughly appreciative audiences.

Clarinet

MELVIN NUSS
VERNON OCHS
GLEN HOWARD PEUGH
GLEN SODERSTROM
LEO COXON
ALICE CRAWFORD
ARCHER BOYLE
EUGENE MEITNER
EDWARD SULLIVAN
WILLIS STOSKOPF

Piccolo

CEDRIC JOHNSON

Oboe

PHILLIP WYMAN

Trumpet

JOE KLINE
JACK WALKER
EVERETT BREWER
ELEANOR OCHS
WILFRED SMITH
Merna Stiles
EUGENE ARENS
LA VERNE DIGHTON

Saxophone

ESTHER EICHMAN
LEONARD GAGE
ANNA LAUDICK

Xylophone

BEVERLY ERICKSON

French Horn

ELMER POPP
ROBERT WALKER

Trombone

NATHAN OCHS
JAMES BOYLE
THELMA CHARLES

Baritone

BERNARD WILDGEN
ROY STOSKOPF

Bass

DREW KLINE
DANIEL OCHS

Drums

EDWARD HOWELL
HENRY DYER
JACK KEETON



The 1931 Flash

ORCHESTRA

Not until this year has Hoisington allowed orchestra and band to be entered as credited subjects in the curriculum of the school.

The orchestra, under the direction of Mr. Crawford, has met the needs of both school and town in providing entertainment at lyceum numbers, school activities, and its public concerts.

Violin

BRENDON GREEN
LEORA BEALS
WINONA FULLER
IRMGARD KOERBER
ALICE RUTH LEONARD
MILDRED MCGINNIS
ESTON SCHWARTZ
BEATRICE STUKEY
VIRGINIA WILSON
VIRGINIA PICKARD
DONNA HOCH
HELEN STOSKOPF
RALPH HENRY
ORLAND KRUG
JACK KEETON
EDWARD SULLIVAN
ESTHER MURRAY
HENRY DYER
LENORE EICHMAN

Viola

MILDRED LEWIS
GLEN HOWARD PEUGH
ELVA HOCH

Bass Viol

MAX SEGER

Cello

HENRY WILDGEN

Trumpet

JACK WALKER
JOE KLINE

Saxophone

ESTHER EICHMAN
LEONARD GAGE
ANNA LAUDICK

Xylophone

BEVERLY ERICKSON

Marimba

MARJORIE LANGHAM

Drums

EDWARD HOWELL

Sousaphone

DREW KLINE

Clarinet

MELVIN NUSS
VERNON OCHS

Oboe

PHILLIP WYMAN

French Horn

ROBERT WALKER
ELMER POPP

Trombone

NATHAN OCHS

Baritone

ROY STOSKOPF

Flute

MORGAN JOHNS

Piano

LUCILLE BEETZ



DEBATE

Resolved: "That chain stores are detrimental to the best interest of the American public." And thus the Cardinal debate squad started to argue as soon as school opened in September.

Tryouts, held November 4, resulted in the selection of Frederick Stoskopf, Naomi Clarke, Ray Call, Herbert Schrepel, Marjorie Langham, Howard Hartman, G. I. Robinson, and Orpha Lindsay for the 1930-31 squad.

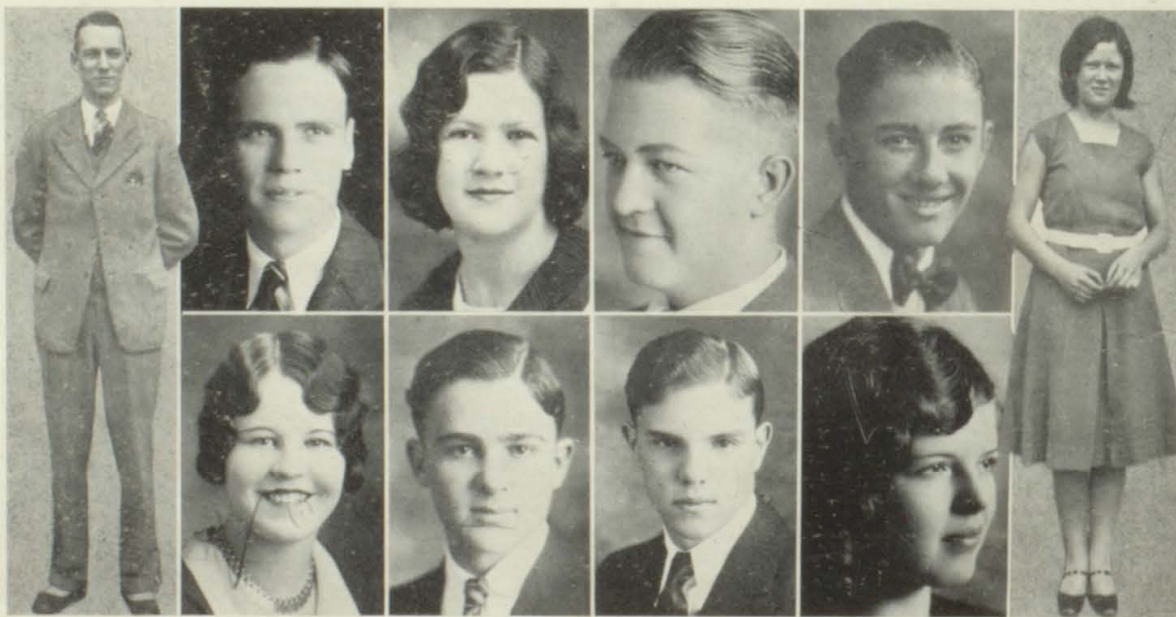
After intensive training, real debating started when the teams journeyed to Winfield, November 21-22, meeting 85 teams from three states. Hoisington took second place, losing to Miami, Oklahoma, but ranking first among Kansas teams.

Three weeks later, the teams took third place in the Hutchinson tournament, being eliminated in the final rounds by Hutchinson teams.

February 21, Hoisington was ranked third in the tenth district debate tournament, which, this year, was held at McPherson. The teams lost close decisions to Hutchinson and Lyons.

Although it was his first year as coach, Mr. Kenneth Peterson was an important factor in the success of the team. In a review of the season, we find that the teams have competed in seventy debates, ten of which were non-decision. Of the sixty decision contests, Hoisington was victorious in forty.

Naomi Clarke, a veteran of the state championship team of 1929-30, was the only experienced debater to start the season. In the state finals at Lawrence in 1930, she was ranked first among speakers of the state. Naomi, G. I. Robinson, and Marjorie Langham will be back next year as senior representatives on the debate squad, the five remaining members of this year's squad having been graduated this spring.



Top Row: HARTMAN CLARKE SCHREPEL ROBINSON
KENNETH PETERSON, Coach
Second Row: LINDSAY STOSKOPF CALL LANGHAM

NAOMI CLARKE



FLASH STAFF

When the senior class decided to establish a precedent by publishing a school annual, it threw an innocent staff right in the middle of a lot of trouble.

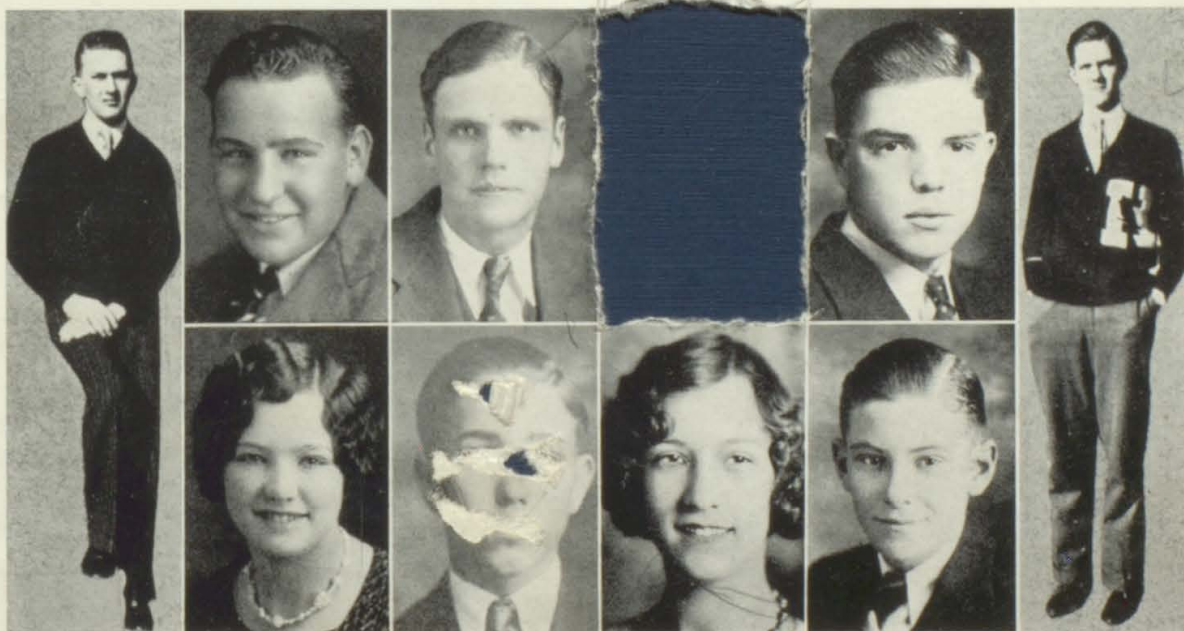
Many staffs put forth a big line about endeavoring to make an annual that is entirely different from the one put out the year before. They promise that everything is original, and the whole book somewhat of a masterpiece.

As for ours being a masterpiece, pass on to the next question, is it original? Well, yes and no. And is it an improvement over preceding annuals? Why most certainly, it's the first.

If our writeups bore you, don't be impatient—they bored us, too. And if the pictures frighten you, don't be alarmed—they are the same fellows we've been going to school with for the last year.

We hope that when you receive this book, you will file it with your Monkey-Ward catalogs, to cherish for the rest of your futile lives, so that when you are old and retired with long white whiskers, a private airplane, and hordes of grandchildren, you may glance back through this infamous volume and laugh at the homely faces of former classmates.

Editor.....	CARL KINDSVATER
Business Manager.....	GLEN SODERSTROM
Assistant Editor.....	HOWARD HARTMAN
Assistant Business Manager.....	MAX SEGER
Circulation.....	ROY CALL, ROBERT SMITH ELAINE TINDALL
Feature.....	BEVERLY ERICKSON, CARL SECHRIST FRANCES JANE CHURCHILL



Top Row: SEGER HARTMAN ERICKSON CALL
CARL KINDSVATER, Editor GLEN SODERSTROM, Bus. Mgr.
Second Row: CHURCHILL SECHRIST TINDALL SMITH



The 1931 Flash



"The Squire"

"The Admiral"

"ALABAMA BOUND"

"A-l-l A-b-o-a-r-d ! We're bound for Alabama!" Such was the cry when the junior class presented Walter Ben Hare's "Alabama Bound," a 3 act comedy, directed by Mrs. Glenn Robbins and Miss Enola Snodgrass.

Although the play centers about Bemis's difficulty in fulfilling the requirements of his uncle's will, the bashfulness of Stubby when with Sammie Bell, the piping voice of Squire Piper, and Fay's love for Bemis, were all interesting features.

The cast: Bemis Bennington, MANO STUKEY; Fay Fairbanks, LUCILLE BEETZ; Stubby, ROBERT SMITH; Genevieve McGully, GLADYS KEENAN; Jeremy Wise, EDWARD HOWELL; Sammie Bell Porter, CLARA DUMLER; Mrs. Porter, IRMGARD PETT; Professor Jabb; HENRY WILDGEN, Beverly Loman, JAMES McCUTCHAN; Mrs. Courtenay, MARJORIE LANGHAM; Squire Piper, G. I. ROBINSON; Pink, LUCILLE STOSKOPF.

"GREEN STOCKINGS"

A drunken Aunt Ida, Tarver's election campaign, and mixed up love affairs are words that ably describe A. E. W. Mason's "Green Stockings," as presented by the Girl Reserves under the direction of Miss Marie Isern.

As to the plot—Celia Farad places a notice in the paper telling of her fiancé's death. Then, that very same day, Colonel Smith appears!

The cast: Celia, NAOMI C. SMITH; Robert Tarver, ROBERT ERICKSON; Rockingham, ELAINE TINDALL; Henry Steel, GLEN SODERSTROM; Schrepel, MARTIN KENNETH SMITH; Frederick Stoskopf, PHYLLIS BEVERLY TRENCHARD; Margaret Ann Murphy, MADGE MAX SEGER; James Raleigh, MONROE BECKETT; Brendon Green, WILLIAM FARADAY; Herbert

"THE FOURTH WALL"

"Hullo, is that Policeman Mallet? Mr. Ludgrove speaking from Heron Place. Just listen a moment . . ." Bang!

And the puzzled constables arrive a few moments later to find Mr. Ludgrove huddled over his desk with telephone receiver in one hand and a smoking revolver in the other. Suicide? Of course . . . but Susan and Jimmy doubt that theory.

That, in brief, is the plot of the senior class presentation, "The Fourth Wall," a detective thriller by A. A. Milne. Miss Clark, Miss Morgan, and Mr. Kroesch supervised the play.

The cast: Susan, ELLEANOR GREGG; Jane, VIRGINIA PARKER; Mrs. Fulverton-Fane, ELEANOR PEAK; Jimmy, TROMER SMITH; Carter, MAX SEGER; Ludgrove, LEONARD FIELD; Laverick, RAY CALL; Major Fothergill, NORVILLE MILLER; Sergeant Mallet, RANDALL McCORKLE; Mallet, HERBERT SCHREPEL; Adams, JIMMY CLIFT.

The 1931 Flash

"ALABAMA BOUND"

Top Row: KLINE LUCILLE STOSKOPF PETT DUMLER
R. SMITH KEENAN LANGHAM BEETZ
Second Row: McCUTCHAN ROBINSON STUKEY
WILDGEN WAELDIN HOWELL

"GREEN STOCKINGS"

Top Row: BECKETT MURPHY TINDALL SODERSTROM
SCHREPEL GREEN SEGER
Second Row: MISS ISERN CHILDS ERICKSON
F. STOSKOPF CLARKE SELLERS

"THE FOURTH WALL"

Top Row: PARKER T. SMITH MILLER CLIFT SEGER
Second Row: GREGG RAY CALL MCCORKLE SCHREPEL
FIELD PEAK





ELLEANOR GREGG
Cheerleader

PEP CLUB

Football! Basketball! Track! Debate! What vivid pictures these words bring to our minds. One picture that stands out is that of pep—organized pep—one of the reasons why the Pep Club was formed.

In the fall of 1930 the Club was organized by Elleanor Gregg, school cheerleader. The other eight members were elected by their respective classes. As their pep representatives, the seniors elected Virginia Parker and Herbert Schrepel, while the juniors chose Gladys Keenan and Mervin Sypolt. The sophomores were ably represented by Frieda Schultz and Nathan Ochs, and the freshmen sent out Bertha Schultz and Carl Sechrist as their "pepsters."

The Club has tried to be at all athletic contests, and has endeavored to encourage some of the long-winded students to yell. They usually succeed because enthusiasm always has been, and always will be, plentiful in "Ol' H.H.S."

But, of course, the Pep Club didn't do all of it themselves; there was always the whole-hearted support of the faculty, student body, and townspeople, and with the added help of the band, pep speeches by business men, snake-dances, and bonfires, the old pep and spirit boosting was comparatively easy.

Top Row: OCHS F. SCHULTZ SYPOLT B. SCHULTZ SCHREPEL PARKER
Second Row: KEENAN GREGG SECHRIST



FOOT BALL

THE SEASON

With 13 lettermen reporting for the first workout, prospects for another successful Cardinal eleven were exceedingly bright. All but one of the thirteen were only one-year men, but, in spite of their apparent lack of experience, the boys came through with 8 wins, no defeats, and no ties—the first all-victorious team Hoisington has ever had.

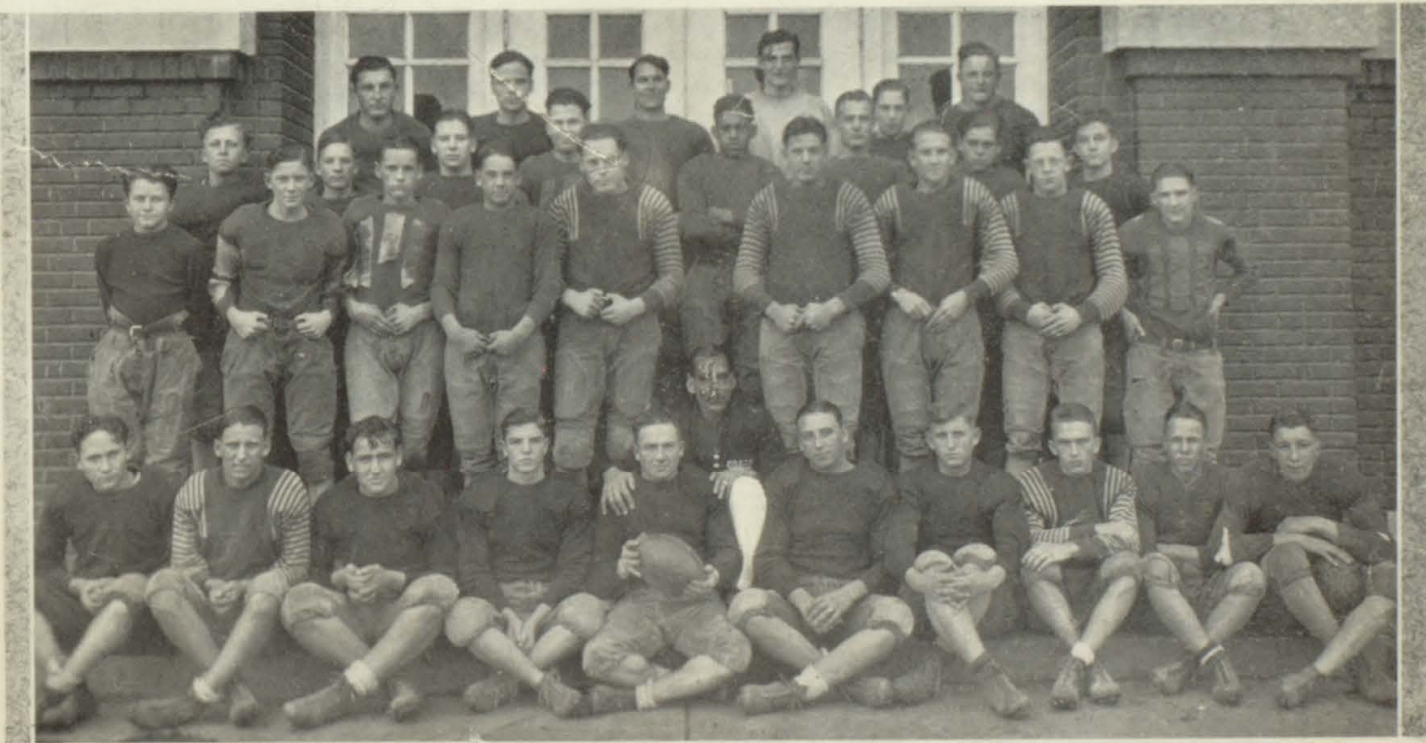
While showing a powerful scoring machine, the 25-6 victory over Bunkerhill also brought out several weaknesses in the defense. However, the stirring 7-0 triumph over a confident Lyons eleven the next week found but few traces of this fault. The Cardinal offensive got "hot" again in that memorable mud tussle with Kinsley when it scored a 31-0 victory for Hoisington. Still on their high horse the next Friday, the Cards smothered Russell 51-0. The following week Hoisington played one of the hardest games of the season, defeating Hays 27-7. Sterling and Larned were the next victims of the red tornado, losing by scores of 33-0 and 31-0, respectively. The season was brought to a fitting close Thanksgiving Day when the Cardinals downed their ancient rivals from Great Bend in a satisfying 31-0 game.



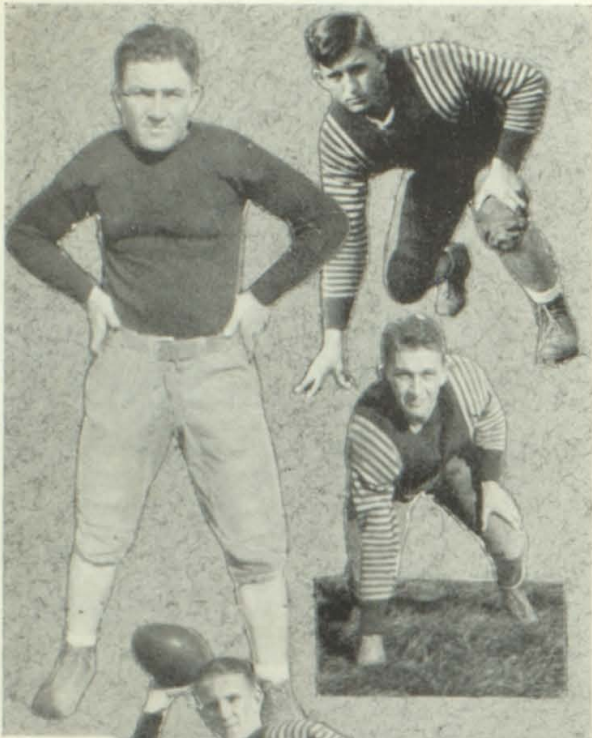
C. C. HARDY
Coach of Athletics

Hoisington 25.....	Bunkerhill 6	Hoisington 27.....	Hays 7
Hoisington 7.....	Lyons 0	Hoisington 33.....	Sterling 0
Hoisington 31.....	Kinsley 0	Hoisington 31.....	Larned 0
Hoisington 51.....	Russell 0	Hoisington 31.....	Great Bend 0

Top Row: RIEDEL HARTMAN BAHR SELLERS O. BOYLE POPP
Second Row: LINSNER M. KELTNER OESER DYER HURD JOHNSON BUDIG DUMLER
Third Row: GREEN R. SMITH JESSUP LOWRY WARD STUKEY T. SMITH TINDALL SHIVES
Fourth Row: MILLER CLIFT SEGER CALL CAPT. McCORKLE COACH HARDY KELTNER
 DEINES KINSDVATER MYERS WAELDIN



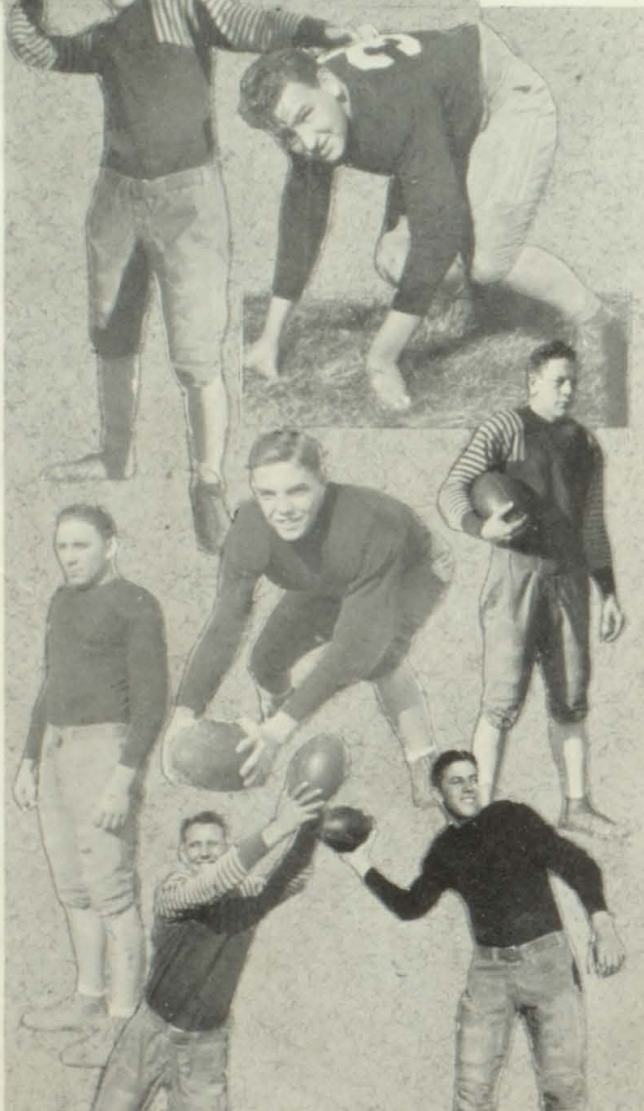
FOOT BALL



PALMER DEINES *Guard*
Junior, 2 Letters

RANDALL McCORKLE, Captain *Tackle*
Senior, 2 Letters

CARL KINDSVATER *End*
Senior, 2 Letters



TROMER SMITH *Halfback*
Senior, 2 Letters

MAX SEGER *Guard*
Senior, 2 Letters

ELDON TINDALL *Halfback*
Senior, 2 Letters

ROY D. CALL, Co-Capt. *Center*
Senior, 2 Letters

EARL KELTNER *Tackle*
Senior, 3 Letters

MANO STUKEY *Quarterback*
Junior, 2 Letters

JAMES CLIFT *End*
Senior, 1 Letter



*Stukey takes it on
a wide end run
against Sterling.*

FOOT BALL

MAURICE JESSUP *Halfback*
Senior, 2 Letters

ORVIL WARD, Captain-elect *Fullback*
Sophomore, 2 Letters

JOE RIEDEL *Tackle*
Sophomore, 1 Letter

NORVILLE MILLER *Halfback*
Senior, 1 Letter

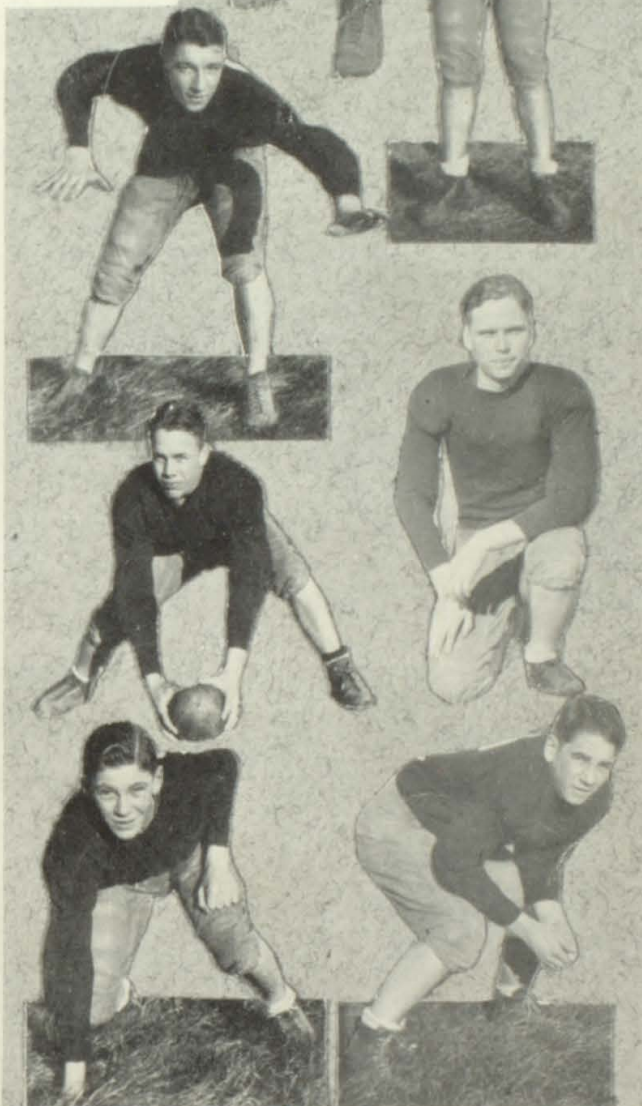
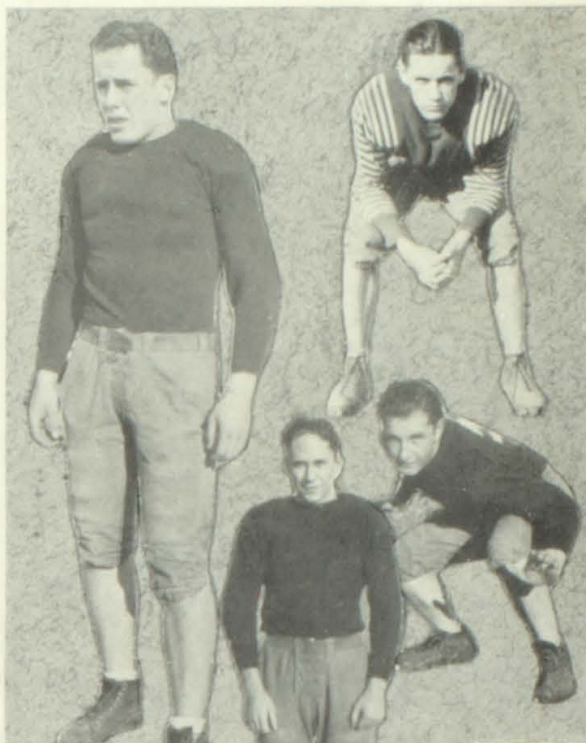
VERNON WAELDIN *Tackle*
Junior, 1 Letter

HOWARD HARTMAN *Tackle*
Senior, 1 Letter

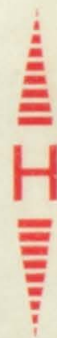
CLARK MYERS *Center*
Junior, 2 Letters

RAY LOWRY *Halfback*
Sophomore, 2 Letters

ROBERT SMITH *Halfback*
Junior, 1 Letter



*A Touchdown!
One of many in
Russell game.*



BASKET BALL



ROY D. CALL
Honorary Captain

THE SEASON

At the beginning of the 1931 basket ball season, Coach Hardy found his prospects much the same as they had been in football—plenty of lettermen, but no outstanding stars. The season ended with two games won and seven lost, showing the usual handicap of lacking support and pep both by school and townspeople.

In the season's opener with Sterling, which the Cards lost 14-10, the Hoisington basketeers proved to be a hard crew to beat. Although the next week Lyons crushed the Redbirds 36-10, the Cards rallied and gave Holyrood a stiff battle, losing 15-12. For the first victory of the season, Claflin was sent home with the small end of a 19-9 score.

A return game with Sterling brought defeat in a fast and interesting game which ended 18-12. Another loss to Bunkerhill, 26-7, was followed by the second win over Claflin, 26-19, but in the last game of the season with Lyons, the home team met a smashing 35-6 defeat.

February 14, Hoisington entered in the annual invitation tournament at La Crosse, where they were eliminated in the first round by Schoenchen, in a fast, hard-fought, 21-12 battle.

The second string squad came out more successfully this year, taking three out of eight contests.

Of the Cardinal squad, five lettermen, Smith, Ray Call, Roy D. Call, Miller, and Soderstrom, are being lost by graduation. This leaves three, Myers, Stukey, and Waeldin, as a nucleus for next year's team.

<i>Top Row:</i>	SODERSTROM	SELLERS	WÆLDIN	COACH HARDY
<i>Second Row:</i>	HOWELL	PEER	T. SMITH	STUKEY MILLER
<i>Third Row:</i>	JESSUP	MYERS	RAY CALL	ROY CALL HENRY DAILY



BASKET BALL

RAY CALL *Forward*
Senior, 2 letters

VERNON WAELDIN *Center*
Junior, 1 Letter

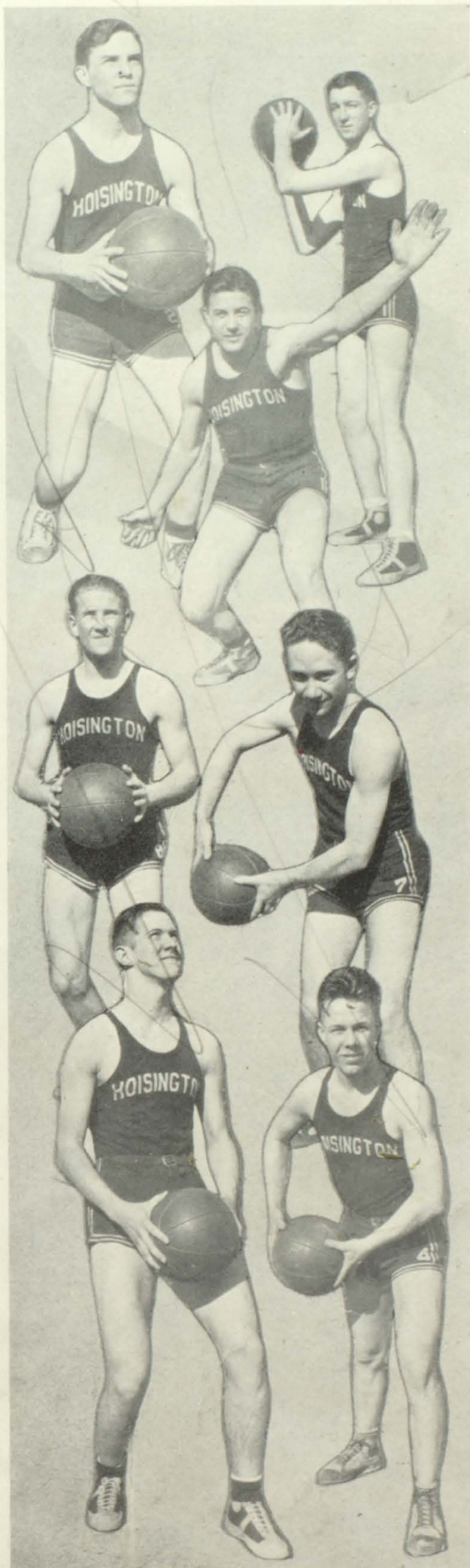
MANO STUKEY *Guard*
Junior, 2 Letters

TROMER SMITH *Forward*
Senior, 3 Letters

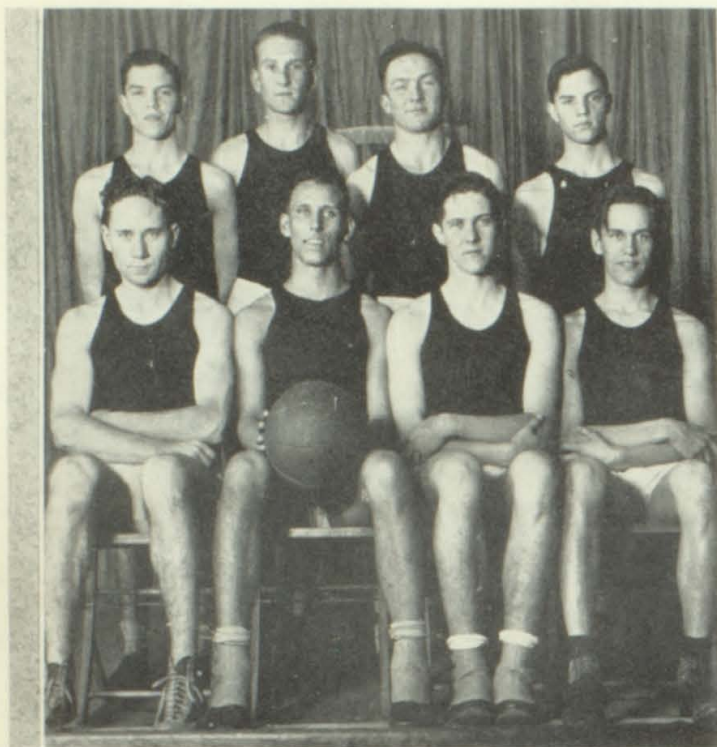
NORVILLE MILLER *Forward*
Senior, 1 Letter

GLEN SODERSTROM *Center*
Senior, 1 Letter

CLARK MYERS *Guard*
Junior, 2 Letters



BASKET BALL



SENIORS—BOYS' CHAMPIONS

Top Row: ROY CALL T. SMITH McCORKLE RAY CALL
Second Row: MILLER CLIFT (Capt.) SODERSTROM JESSUP



JUNIORS—GIRLS' CHAMPIONS

Top Row: DUMLER N. CLARKE BARTON HALL
Second Row: HENRY BUTLER KEENAN BURCHFIELD
Third Row: LUCILLE STOSKOPF HONISCH (Capt.)
 SMITH LOIS STOSKOPF

BOYS

By defeating the juniors 13-11 in the finals, the class of '31 won the Boys' Interclass Basketball Tournament for the second consecutive year. The juniors were runners-up, while the sophomores took third place by smothering the freshmen 29-4.

In the second night's games the two upper classes won the right to meet each other in the championship tilt, which proved to be a fast, interesting contest.

The tournament, as arranged for the last few years, serves the double purpose of giving more boys an opportunity to participate in athletics and of developing material for varsity basketball.

GIRLS

Scoring almost at will, the junior girls walked off with the 1931 Interclass Basketball Tournament by trouncing the seniors 35-19. Second place went to the sophomores, third to the seniors, and fourth to the freshmen.

Before defeating the seniors, the new champions had previously smashed the sophomore defense for a 40-23 win and had edged out a 23-21 victory over the freshmen. The sophomores, after dropping their first game came back strong to beat both the seniors and freshmen. The struggle for a third place seems to have been settled on the opening night when the seniors won from the freshmen 32-26.

H CLUB

"H" CLUB

After what was almost a tragic ending of the football season in 1929, a group of sixteen boys cooperated in organizing the "H" Club, the purpose of which was: to promote athletics in H.H.S., to regulate the issuing and use of the letter H as an honorary award, and to sponsor social affairs of this group.

Every boy who has been awarded a letter in any one of the major sports, football, basketball, and track, is eligible for membership. This year there were twenty members, with Roy D. Call as president, Ray Lowry as vice-president, Glen Soderstrom as secretary-treasurer, and Mr. Leon Whiteman and Coach C. C. Hardy as sponsors.

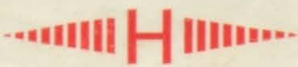
GIRLS' LETTER CLUB

The Girls' Letter Club was instituted in Hoisington High School in 1928. The members of this organization are girls who, through their own efforts, have earned at least 500 points toward the 650 which are necessary for their letter award, a script "H".

These points are earned in various ways—by playing girls' basketball, baseball and volley ball, and by being in pageants. Social activities of this club include monthly meetings, social hours, and parties.

There were twenty-six members of the club this year. The officers were: Marjorie Stephens, president; Ruby Dawley, vice-president; Elizabeth Stipes, secretary; Virginia Parker, treasurer; and Miss Whisman, sponsor.

Top Row:	CLIFT	MYERS	WARD	KELTNER	MILLER	SEGER	R. SMITH		
Second Row:	T. SMITH	McCORKLE	KINDSVATER	CALL	WAELDIN	HARTMAN	STUKEY		
Third Row:	TINDALL	DEINES	LOWRY	COACH HARDY	R. D. CALL	RIEDEL	SODERSTROM		
Top Row:	LINDSAY	HONISCH	BOTT	SMITH	MISS WHISMAN	LEVETT	BARTON	BUTLER	
Second Row:	MAGILL	CHURCHILL	BURCHFIEL	HENRY	KORF	MURDY	DUMLER	WILSON	HARPER
Third Row:	STIPES	MAUDE	EVELEIGH	MYRTLE	EVELEIGH	GREGG	PARKER	STEPHENS	DAWLEY
			PEAK	WILSON	WINTER				



TRACK

THE SEASON

At this writing the 1931 track season is only a mere possibility of the future. Of course, that doesn't mean a thing in our young lives except that we must hope and pray for the successful season of which we are about to write.

Just a little more than a week after the sprinters, jumpers, crow-hoppers, etc., had exposed their shapely legs to the world, Coach Hardy entered them in a state invitation meet at Sterling. Stukey helped the cause along by winning second in both the 100 and the 220, but the rest of the team seemed to be suffering from the effects of a late March blizzard, or, perhaps, from riding six in a coupe. Although no one else placed, the tracksters do not deserve the popular "razz" for the competition was plenty stiff—Arkansas City swept the meet while Wichita East took second.

Now, in all seriousness, H.H.S. does have excellent prospects for track. Stukey, Soderstrom, Lowry, Clift, and Keltner are the only lettermen, but of the remaining squad of twenty, there are several who have previously proved their track ability in junior high competition. Coach Hardy plans to enter several large meets besides the usual number of dual contests. By the time these affairs roll around, the boys will doubtless be in shape to fall in the footsteps of previous championship teams that Hoisington has produced.

Top Row: BECKETT HURD EVELEIGH
Second Row: H. WILDGEN E. KELTNER WARD STUKEY COACH HARDY
Third Row: LOWRY BAHR SELLERS POPP JESSUP MYERS



I - N - S - P - I - R - A - T - I - O - N



"Nature"



Hoisington Chamber of Commerce

OFFICERS

<i>President</i>	J. R. MURPHY
<i>Vice-President</i>	RALPH CALL
<i>Treasurer</i>	J. L. PEIPER

DIRECTORS

J. R. MURPHY	FRANK SODERSTROM
RALPH CALL	J. S. VANIMAN
T. C. MORRISON	A. I. GEIMAN

City of Hoisington

SURVEY

Dwellings.....	584
Duplexes.....	30
Apartments.....	86
Business Buildings.....	75
Churches.....	7
Banks.....	3
Schools.....	5
Total School Enrollment.....	1,033
Population.....	3,001

Barton County Club

The Barton County Club was organized in June, 1924, and chartered July 2, 1924, as a recreation center for this community.

Two years before, the Missouri Pacific Railroad Company, needing a source of water supply for this division point, constructed an artificial lake covering 83 acres with water to a depth of 35 feet at its deepest point. The railway company then leased the grounds to an organization known as the Barton County Club.

This lake, deriving its name from the county in which it is situated, serves as a nucleus for year round activities which include swimming, fishing, boating, dancing, picnicking, croquet, and horse-shoe playing. The club has four tennis courts, a nine-hole golf course which is considered one of the best natural courses in the state, and a club house equipped with a dance floor and locker rooms. The club grounds cover an approximate area of 120 acres and are an ideal place of recreation for its members.

The membership has grown until now it extends into six surrounding counties with 850 families enjoying the privileges of a country club.

Cheyenne Bottoms

Forty years ago, some of the early settlers of this section of the state hunted buffalo on the Cheyenne Bottoms, an extensive tract which the Cheyenne Indians had used for a hunting ground.

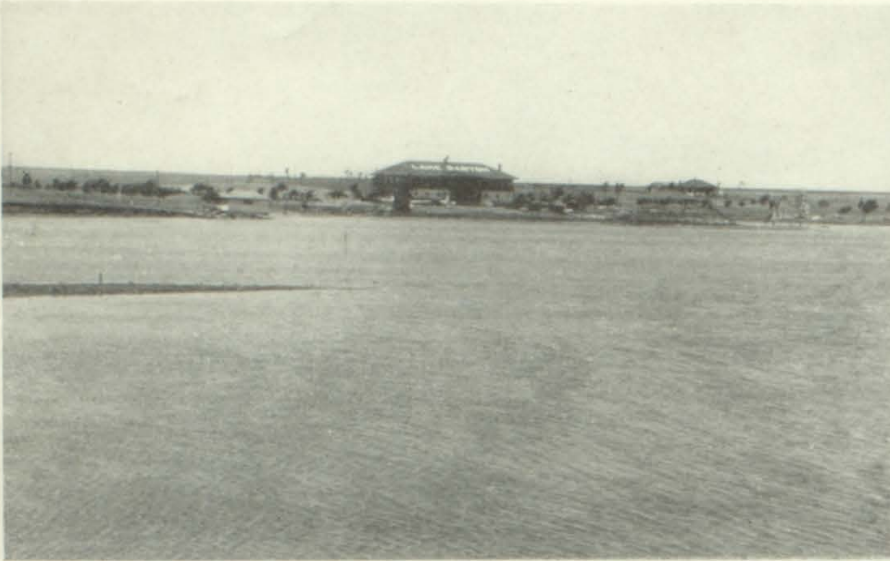
Before the big flood of 1927 the Bottoms was covered periodically with water which drained from Deception and Blood Creeks. During dry periods, alkali seeped up through the soil, preventing the survival of any but salt grasses.

The Cheyenne Lake area, which covers approximately 20,000 acres attained its largest size in 1927 by the flood waters of that year. This land, still a favorite hunting ground for sportsmen, is the home of many kinds of geese and ducks—pintail, mallard, gadwall, shovelers, blue and green wing teal, red-heads, and occasional wood-duck.

Such an abundance of wild life interested the Isaac Walton League in making the Bottoms a game refuge. Through their interest and support, Congress appropriated \$250,000 to convert this lake into a federal game refuge.

The lake area is an unusual sight, the thousands of acres under water giving one the impression that the state of Kansas has an inland sea.

Hoisington Views



Lake Barton from East Bank



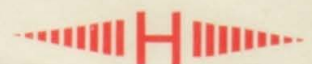
*Hoisington
Municipal Airport*



Main Street from the South



Lake Cheyenne

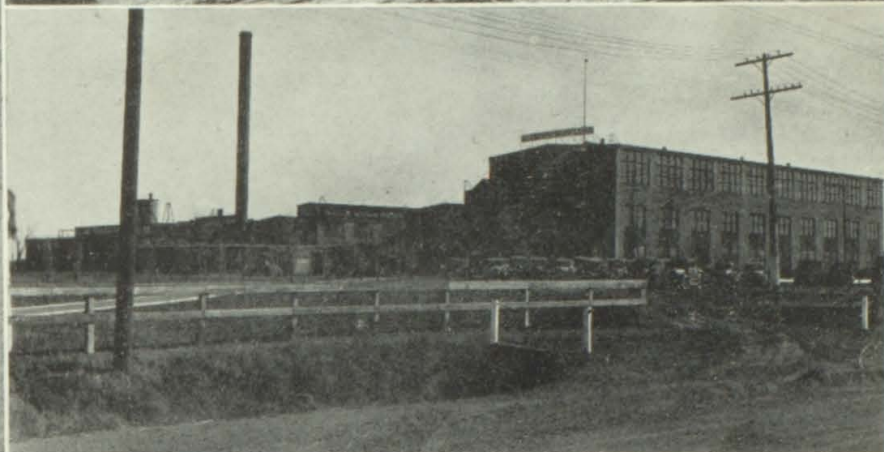


Hoisington Views

Cutting Ice on Lake Barton



Missouri Pacific Shops



*Main Street and the
School Building*

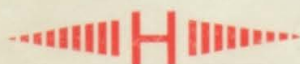


Harvest Time

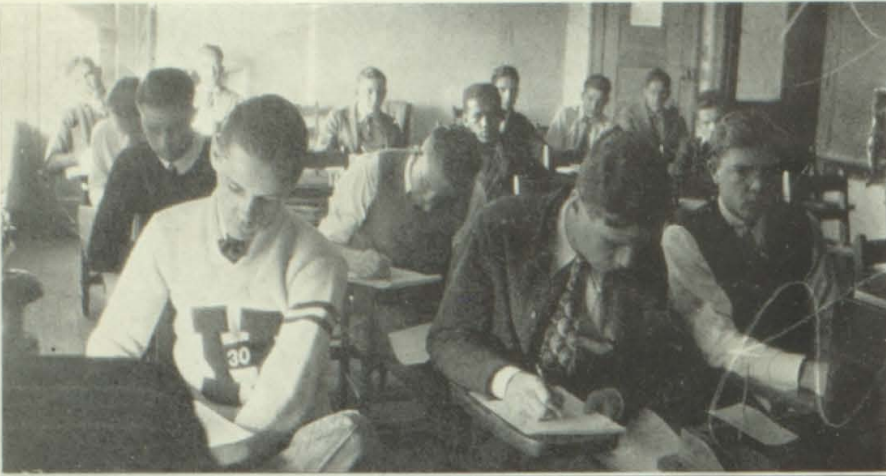


*As Santa Claus Saw
Main Street*

Pages 48, 49, 50 and 51 were
sponsored by The Hoisington
Chamber of Commerce



CALENDAR



Los Alumnos—Physics



Las Alumnas—Cooking I



St. Peter at the Pearly Gates



*Daniel in the Lions' Den
(MR. KROESCH)*



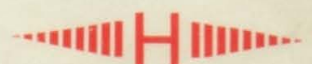
*MR. J. K. ABEL
Main Hall in Background*



*Jack Considers the Situation
from Another Angle*



*Shop Scene—
Advanced Manual Training*



CALENDAR

"Doorway to Hell"

Ye Olde Peppe Band

So This is Football!

*"RED" TINDALL,
Our Guardian Angel*

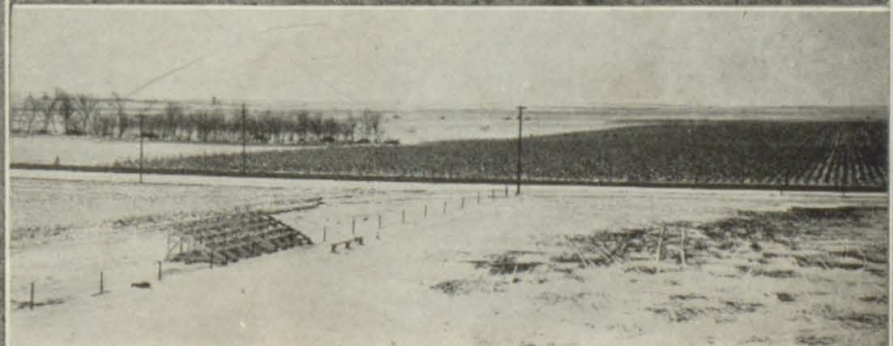
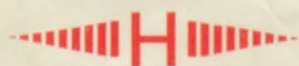
*An Old Spanish Custom
—Tacky Day*

Curtain!

*Old Faithfuls—
Loretta and Tuggle*

*Question:
Where's "Fat" Seger?
(The Famous Hays Draw-
back Play)*

*Car Tracks in the
Snows of Time*





*A Scenic View
on Blood Creek*

His Fourth Major Sport



*Snickers, Snicker—
Senior Cage Stars*

Escape—At the Noon Hour



*The Three Bad Men—
Monk, Herby, Zirk*

Note the Megaphone

*Our Relay Queen Candidate
LUCILLE BEETZ*

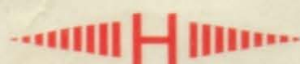


*A Favorite Hangout—
"Pat's"*

Chanelys



*A Bird's Eye View of Our
Famous City*



*Some Junior Mermaids
at the Lake*

Hail! the King!

*Smith Brothers—
Top Row: BOB TROMER
Bottom Row: TRADE MARK*

"Toughy" Whiteman

*Wuxtra—
Flirtin' With Dynamite*

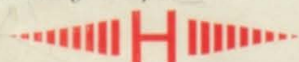
*JOHN FREDERICK WILLIAM
STOSKOPF, JR. (Before)*

*That Good Ol'
Pepsodent Smile*

J.F.W.S., JR. (After)

Our Campus

Diddy-Yap, Horsie



OBITUARY

The class whose remains we are about to inter, is the oldest child of our dear faculty sponsors, Marguerite Clark and her consort, Helen, nee Morgan. The class, as it were (was, will be, and is), leads the funeral processions of the year. It was born (originated, instituted, initiated) in the year of our Lord, 1919, and suffered twelve long years in captivity.

A fortunate (blessed, merciful, unaccountable) slight on the part of the faculty and administration is of strong bearing in this joyful instance. For several years its fate was in the balance—growing neither better nor worse. But on May 22, 1931, at 8 p.m., its spirit passed into the beyond (approximately three miles south on No. 8 highway, turn to left and follow the best path). The cause of its rather untimely exodus is given as the school board's gift to the faculty.

A large audience attended and enjoyed (rejoiced, appreciated) the funeral services held at the high school auditorium. Interment was held in Andy Henry's pasture and the remains were lowered into the dust of origin after a former member of the class dropped in a forged not-tardy slip made out to Saint Peter with the principal's compliments (hooey, razzberries).

THE REV. JAKE BLUNT

Hoisington, Kansas

MR. ELDON A. TINDALL
(and members of Senior Class)
Hoisington High School

Gentlemen:

As this is the first annual to be published by the senior class, there has arisen a great deal of question as to how, when and where the annual funds disappeared.

We are enclosing the long-promised financial report:

LIABILITIES

Hush-Money to Janitor	\$ 50.00
Haircuts for ye Editor	4.35
New Suit for Business Manager	85.28
Staff Parties and Banquets	275.99
New Tires for Hartman's Packard	100.01
Pair Oversize Pants for Seger	25.71
College Tuition	300.00
Printing	1.87
Engraving58
Surplus and Profits	??.??

ASSETS

Received for Not Printing Snap Shots	\$108.51
Received for Flattering Write-ups (see page 11)	481.23
Annual Sales	5.10
Mowing Lawns and Washing Windows	17.91
Hamburger and Peanut Stands	38.51
Artistic Re-touching of Junior Photos	915.49
Miscellaneous Bribes and Handouts	99.50
Free-Will Offering10

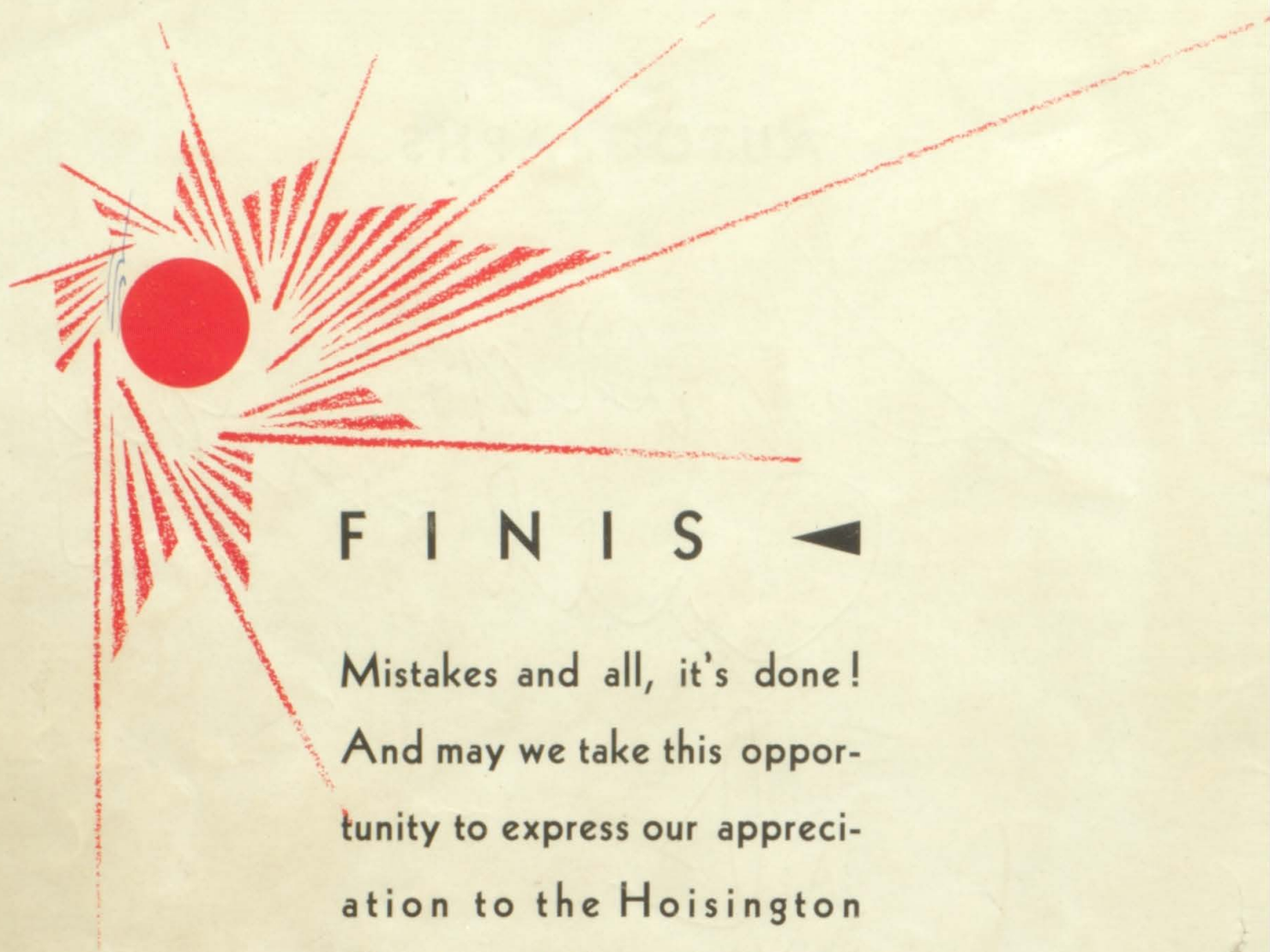
We are leaving on the first train for the Kalamazoo Korrespondence Kollitch.

Respectively yours,

MATHEW
MARK
LUKE
JOHN
REBECCA???

AUTOGRAPHS

AUTOGRAPHS



F I N I S ◀

Mistakes and all, it's done!
And may we take this opportunity to express our appreciation to the Hoisington Chamber of Commerce for its financial backing, to Miss Clark for her excellent assistance, and to all those persons and organizations that have so ably cooperated with us in our work. We hope that our book may be an inspiration for succeeding classes to establish the FLASH as an annual publication « « «



